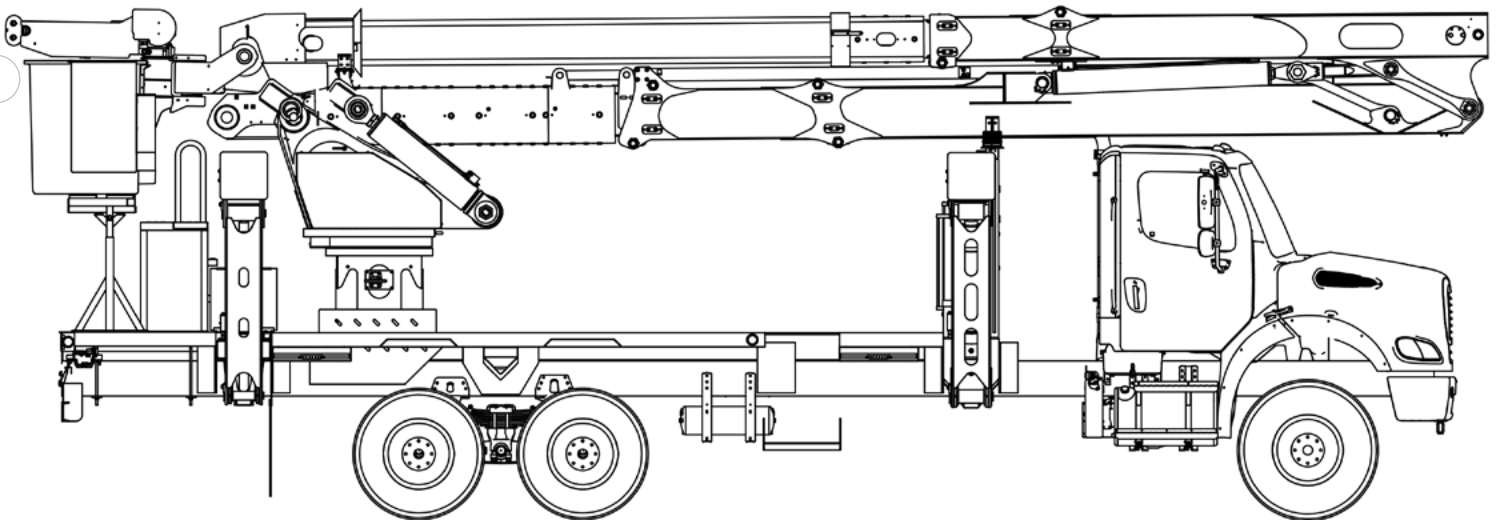




# TECH TIPS

SETTING ZERO ON TM LEVELING CONTROLLER

NO. 82



**SERVICE CALL:**  
SETTING ZERO ON TM LEVELING  
CONTROLLER



**MODEL(S):**  
TM MODELS USING THE  
LEVELING CONTROLLER



**TOOLS NEEDED:**  
SIMPLE HAND TOOLS  
JUMPER WIRE

TEREX UTILITIES TECHNICAL SUPPORT TEAM

PHONE: 1-844-TEREX4U (1-844-837-3948) | EMAIL: [UTILITIES.SERVICE@TEREX.COM](mailto:UTILITIES.SERVICE@TEREX.COM)



## **DANGER**

Failure to obey the instructions and safety rules in the appropriate Operator's Manual and Service Manual for your machine will result in death or serious injury.

Many of the hazards identified in the Operator's Manual are also safety hazards when maintenance and repair procedures are performed.

## **DO NOT PERFORM MAINTENANCE UNLESS:**

- ✓ You are trained and qualified to perform maintenance on this machine.
- ✓ You read, understand and obey:
  - manufacturer's instructions and safety rules
  - employer's safety rules and worksite regulations
  - applicable governmental regulations
- ✓ You have the appropriate tools, lifting equipment and a suitable workshop.

The information contained in this Tech Tip is a supplement to the Service Manual. Consult the appropriate Service Manual of your machine for safety rules and hazards.



TECH TIP 82 | RELEASED 11.17.2022 | VERSION 1.1  
©TEREX UTILITIES. ALL RIGHTS RESERVED

# CONTENTS

## TECH TIP #82

4

| *Unplug the servo valve*

| *Manually level the platform*

**INTRODUCTION**  
**STEP 1 - STEP 2**

5

| *Old Controller*

**STEP 3**

6

| *New Controller*

| *Remove wires and test*

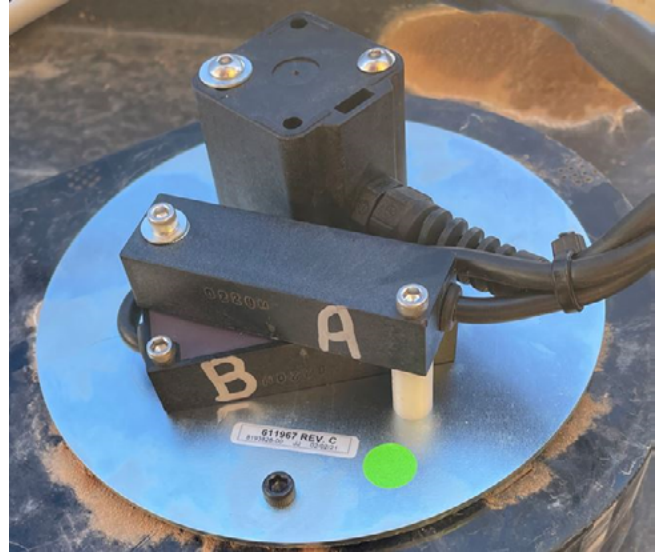
**STEP 4 - STEP 5**

## INTRODUCTION

Verify the sensing unit mounted on the end of the basket leveling shaft is in the proper vertical orientation relative to the platform as shown below. **Figure 1** shows the location on the unit.



**FIGURE 1**

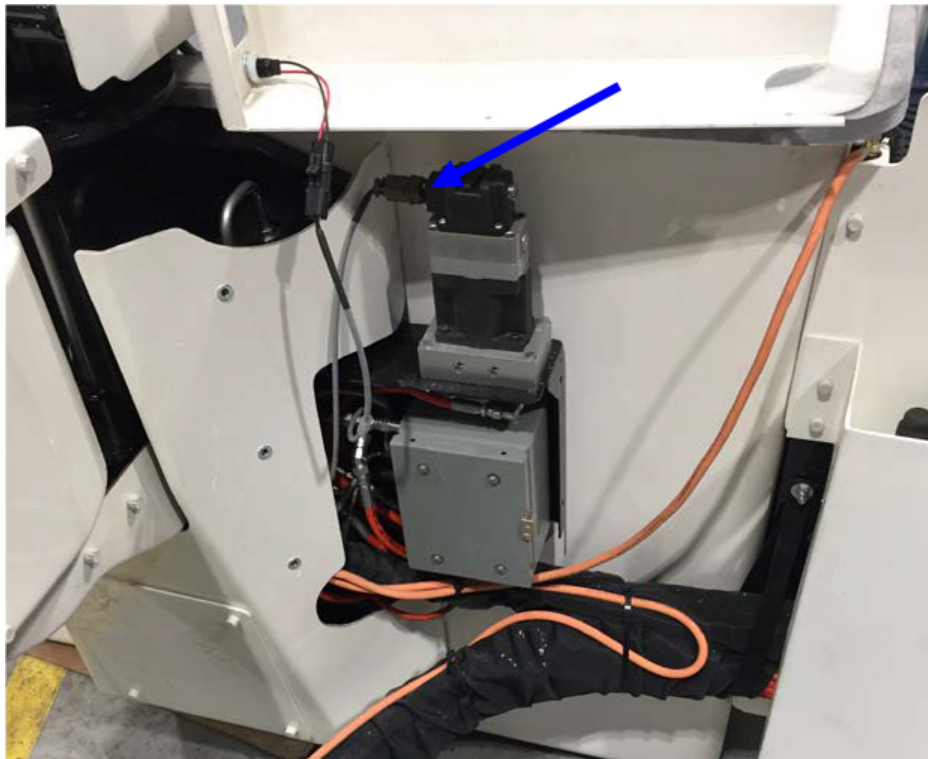


### STEP 1

Unplug the servo valve. **Figure 3**

### STEP 2

Manually level the platform to zero degrees.



**FIGURE 3**

### STEP 3 (Old Controller)

A yellow wire will be taped up inside the battery box. Insert the yellow wire into the middle fuse box to power up the controller.

**Note:** If there is also an orange wire in the box, skip to **Step 4** for directions on the new controller released in the summer of 2022.

Using a jumper wire, connect pins B1 and B2 together on the controller. The light on the controller will turn red for 3 seconds before turning green. This indicates that level has been set successfully.

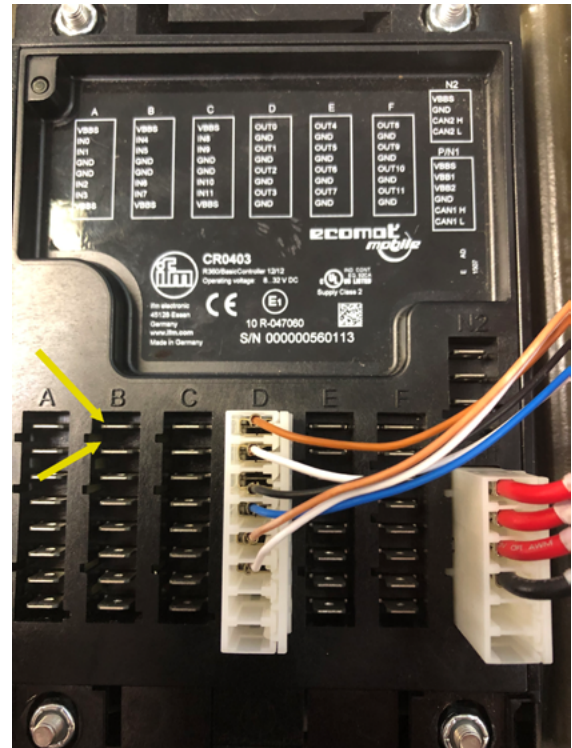
**Figure 5.**

Remove the jumper wires and the yellow wire, taping it back into place.

Proceed to **Step 5**.



**FIGURE 4**

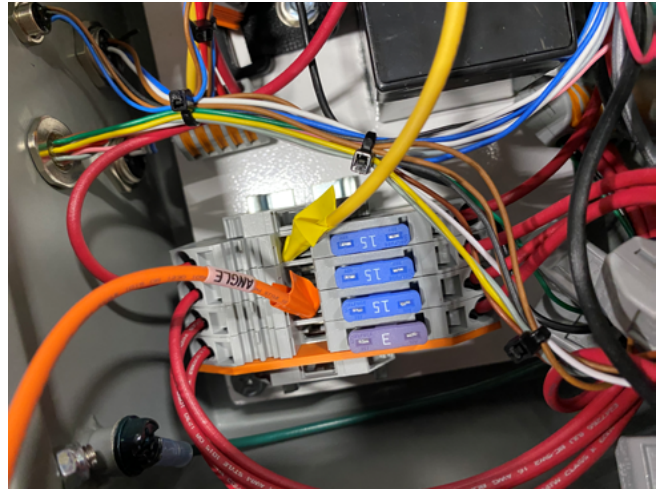


**FIGURE 5**

## STEP 4 (New Controller)

A new controller was released in the summer of 2022. It can be identified by the orange wire connected to the fuse box. If the system has this orange wire, put voltage to it for at least 6 seconds. The Status LED will flash for 6 seconds and the go solid indicating zero has been set. **Figure 6**

Remove both the yellow and orange wires and tape them back up inside the box.



**FIGURE 6**

---

## STEP 5

Reconnect the servo valve and then cycle the unit from the lower controls and then the upper controls to verify the platform remains level.



FOR FURTHER ASSISTANCE,  
CONTACT THE TEREX UTILITIES TECHNICAL SUPPORT TEAM  
PHONE: **1-844-TEREX4U (1-844-837-3948)** | EMAIL: **[UTILITIES.SERVICE@TEREX.COM](mailto:UTILITIES.SERVICE@TEREX.COM)**

---